

# The Community of Exceptional Artists

**Exhibition Dates: July 18 – August 15, 2015**

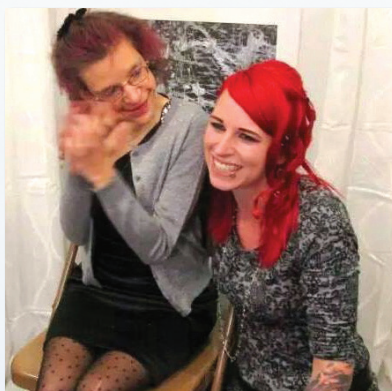
**Reception and Fundraiser:  
Saturday July 18, 2015  
from 2 to 4 p.m.**

Proceeds from the sale of  
artwork go to The Community  
of Exceptional Artists

*"The experiences I am gaining with my students  
has been my motivation to pursue a career in  
Art Therapy. My passion for art will help me  
change the world."*

~ Samantha Cook, GSU Student

Samantha Cook's first opportunity to teach a student with a rare disability led her to a new passion; using art as a therapeutic tool for helping others with education, self-exploration and expression. Seeing the impact art was having on her first student Liz, Samantha was prompted to host an art show featuring Liz' beautiful creations, where enough money was raised to start an art group for other students of all ages (with and without disabilities). Samantha focuses on self-discovery in her teaching process, allowing students to identify with pieces they are creating. Using their emotions, experiences and personalities, these students show us the importance of expressing one's true self.



visual arts  
**GALLERY**

 **Governors State**  
UNIVERSITY

1 University Parkway  
University Park, IL 60484

[www.govst.edu/gallery](http://www.govst.edu/gallery)  
**708.534.4021**

PA06222015851 ♻